

Minimizing operational costs and disruptions with optimized crew standby planning

- Crew standby buffers are critical to running smooth airline operations and on-time performance
- But most airlines suffer unnecessarily high crew standby costs due to lack of optimized planning and automation

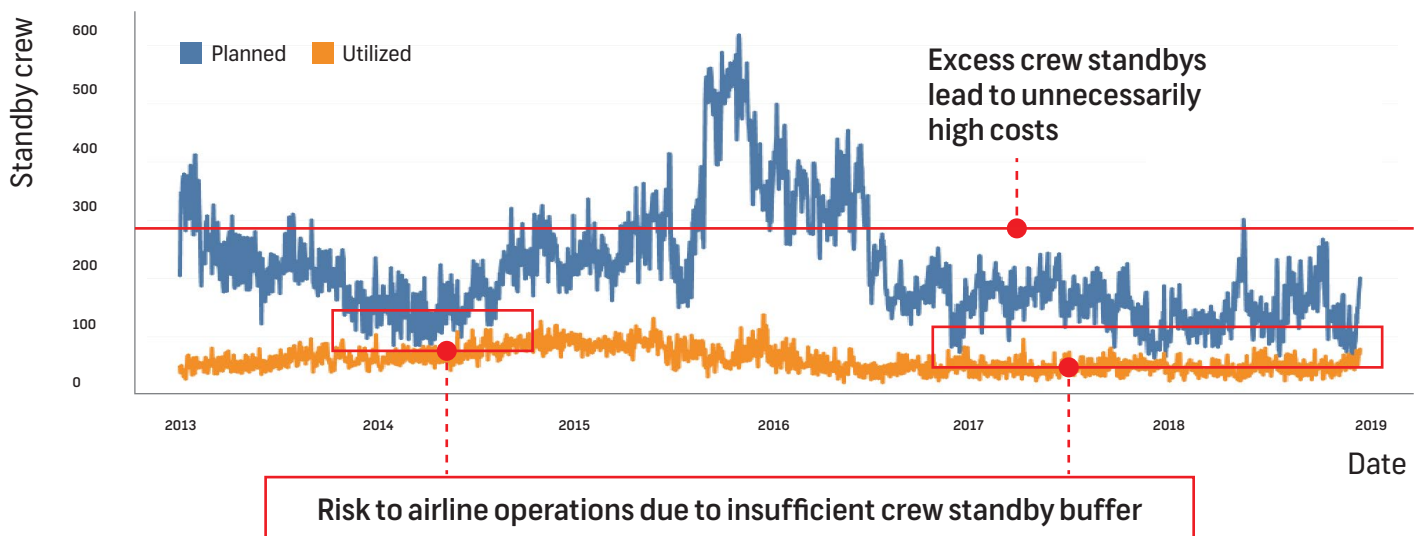
8.8%

of total airline operations costs attributed to crew

24%

of disruptions costs are attributed to crew

Typical airline crew standby planning example:



28%

average crew standby utilization

50%

maximum crew standby utilization

Optimizing crew standby planning helps:

- ✓ Streamline resource planning
- ✓ Reduce overstaffing costs
- ✓ Avoid disruptions
- ✓ Improve crew satisfaction
- ✓ Improve planning for training and other activities

Boost crew standby planning accuracy to 85%

Find out how 